



Charles Hope

**MANCHESTER
TOWNHOUSES**

Intro/ Property Summary

Welcome to our Manchester Townhouse apartments! Experience bright, modern living areas, cosy lounges, dining spaces, and fully equipped kitchens. Large windows flood the space with natural light and offer stunning views of the surroundings. Elevate your stay with shared amenities: a terrace, barbecue facilities*, gym, cycle park, resident lounge, co-working space, and an outdoor kitchen. Explore convenient transport links that make traveling a breeze.

These beautiful townhouses are located in between Manchester city centre and Media City, giving you perfect access to both. Situated in the vibrant neighbourhood of the Northern Quarter, our serviced apartments are just a short walk from some of Manchester's best restaurants, bars, and shops.

The famous Manchester Arena and Manchester Cathedral are also within easy reach. For those who love the outdoors, there is a selection of parks within a few minutes' walk including Hulme Park and Seymour Park. For football fans, Old Trafford is only a 30-minute walk away or 12 minutes via tram. The tram stop is just 4 minutes away, and Deansgate train station is a convenient 4-minute drive. Manchester Airport is a short 12-minute drive.



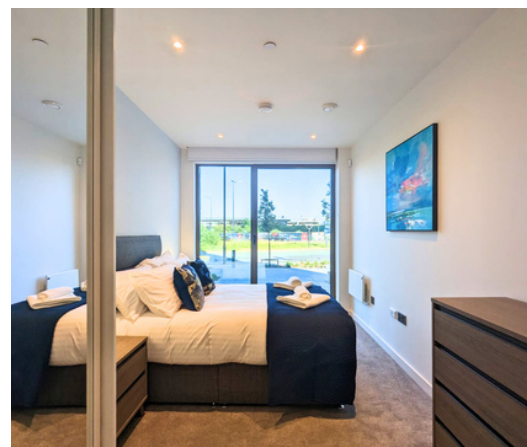
Bedrooms

Two Bedroom Apartment

The two-bedroom apartment is 95sqm (1022sqft) and features a living area, a fully equipped kitchen, two bedrooms, and two bathrooms. The kitchen is fully equipped with modern appliances. The living area has large windows and is furnished with a sofa, a coffee table, and a flat-screen TV.

The master bedroom has a double bed, wardrobes and an ensuite with a walk-in rainfall shower. The second bedroom offers a double bed, wardrobe, and bedside tables. The shared bathroom has a walk-in rainfall shower and a vanity with storage.

Ideal for up to four people staying for business/leisure.



Two Bedroom Townhouse

The two-bedroom Townhouse 95sqm (1022sqft) and features a living area, a fully equipped kitchen, two bedrooms, and two bathrooms. The kitchen is fully equipped with modern appliances. The living area is furnished with sofas and chairs, a flat-screen TV, and a dining table that seats four people.

The two bedrooms are upstairs featuring double beds, flat-screen TV, wardrobes, and bedside tables. The main bedroom has an ensuite bathroom with a spacious shower, while the second bedroom has access to a separate bathroom. Both bathrooms have a walk-in rainfall shower.

Ideal for up to four people staying for business/leisure.

Bedrooms

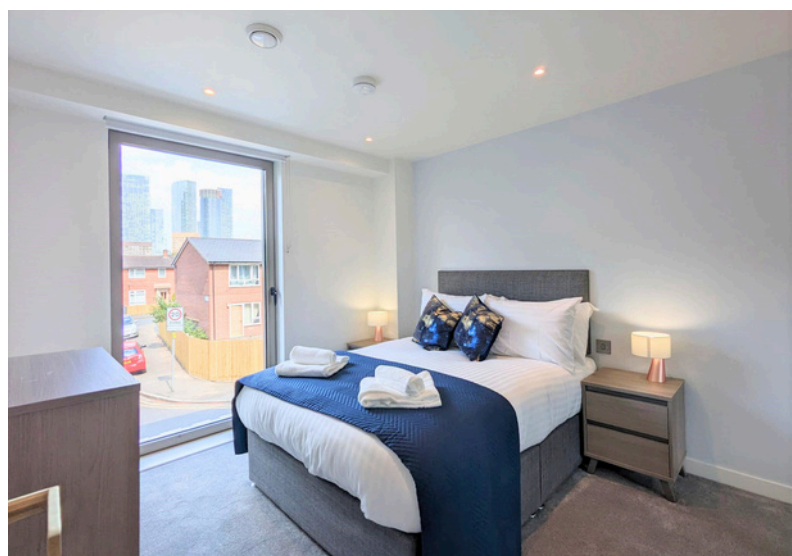
Two Bedroom Townhouse - Terrace

The Two Bedroom Duplex with terrace access is 95sqm (1022sqft) and features a living area, a fully equipped kitchen, two bedrooms, and two bathrooms.

The kitchen is fully equipped with modern appliances. The living area is furnished with sofas and chairs, a flat-screen TV, and a dining table that seats four people.

The two bedrooms are upstairs featuring double beds, flat-screen TV, wardrobes, and bedside tables. The main bedroom has an ensuite bathroom with a spacious shower, while the second bedroom has access to a separate bathroom.

One of the highlights of this apartment is the terrace access. Ideal for up to four people staying for business/leisure.



Bedrooms

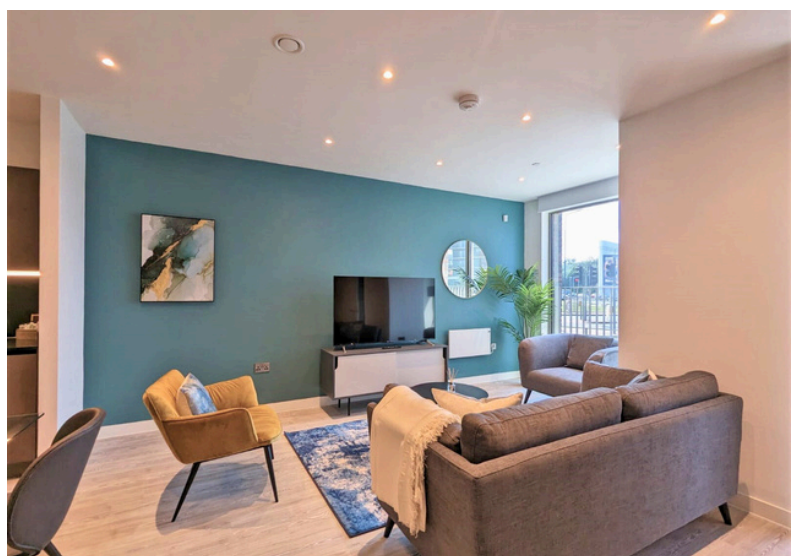
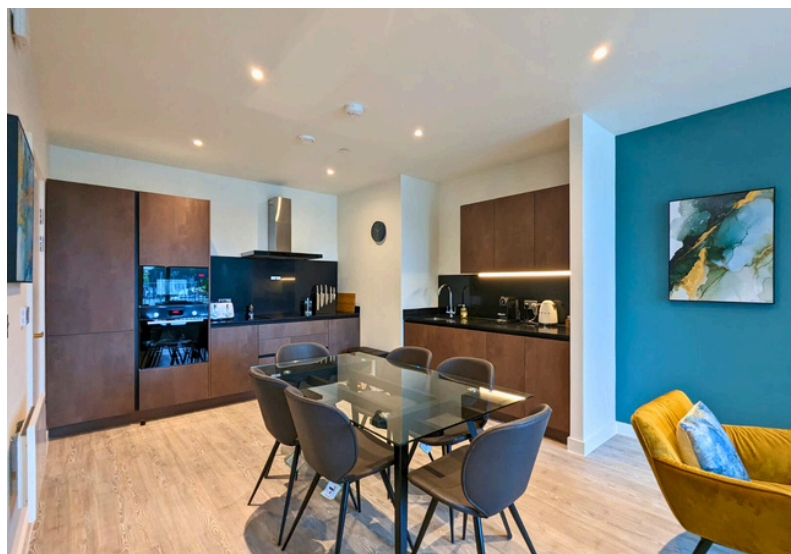
Three Bedroom Townhouse

The Three Bedroom Duplex is 112sqm (1205sqft) and features a living area, a fully equipped kitchen, three bedrooms, and two bathrooms.

The kitchen is fully equipped with modern appliances. The living area is furnished with sofas and chairs, a flat-screen TV, and a dining table that seats four people.

The three bedrooms are upstairs featuring double beds, wardrobes and bedside tables. The main bedroom has an ensuite bathroom with a spacious shower, while the other two bedrooms have access to a separate bathroom with a spacious shower. One of the highlights of this apartment is the terrace access.

Ideal for up to six people staying for business/leisure.



Additional info

Check in and check-out times.

Check-in at 15:00

Check out at 11:00

Access

- When you reach your apartment door, simply key in your 4 digit door lock code followed by the # key and the lock will sound its release and you can enter your apartment or townhouse

Parking

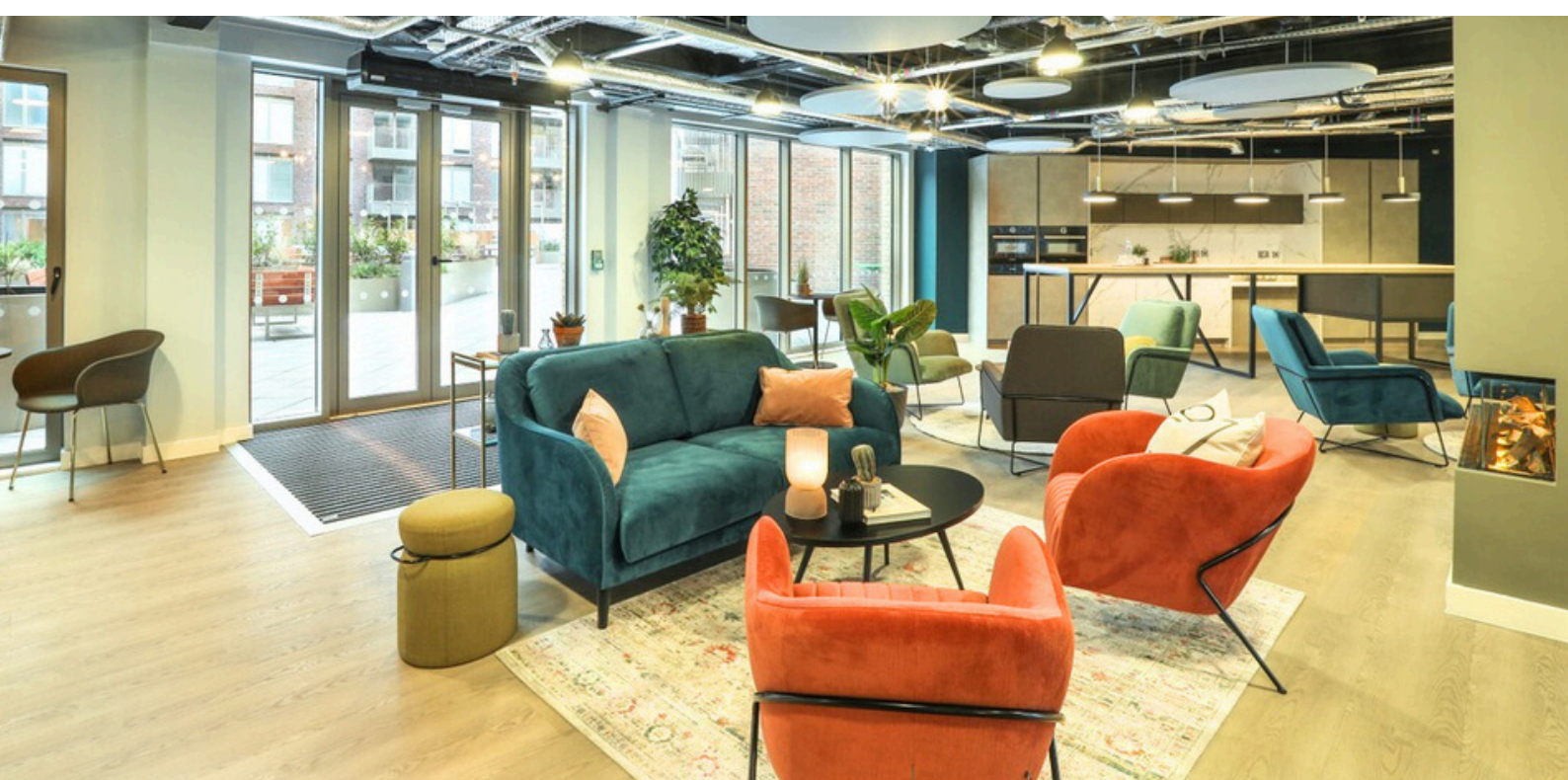
- There is on site parking available, this is chargeable and must be booked in advance of your stay.

Booking Restrictions & Deposits

- 21 years of age
- There is a 15 mile local restriction

Pets









- Pets allowed (on arrangement only) and are chargeable
- 15kg weight limit



Facilities and Amenities

Our serviced apartment in Manchester offers a range of amenities to ensure a comfortable and enjoyable stay.

Here is a list of amenities at Charles Hope Manchester Townhouses .

-  Wi-Fi is available in the rooms.
-  Fully Equipped Kitchen
-  Stovetop
-  Oven
-  Refrigerator
-  Toaster
-  Nespresso machine
-  Microwave
-  Smart TV
-  Towels
-  Hairdryer
-  Parking
-  Washer/Dryer
-  Lift Safety & Security
-  CCTV in common areas
-  Smoke alarms
-  24-hour security
-  Heating
-  Cleaning services
-  Bike Store
-  Co-working Space
-  Resident Lounge
-  BBQ Area
-  Gym
-  Pet Friendly



Distances Train station + Attractions

- Prime location close to MediaCity & Old Trafford football stadium
- Great transport links: Cornbrook Tram Stop is 4-minutes' walk away & Manchester Airport a 12-minute drive
- Enjoy a variety of dining options from local cafes to trendy bars and restaurants
- A shopper's paradise awaits at White City & Hulme retail parks with high street stores, boutiques, and dining options

Map + location.

