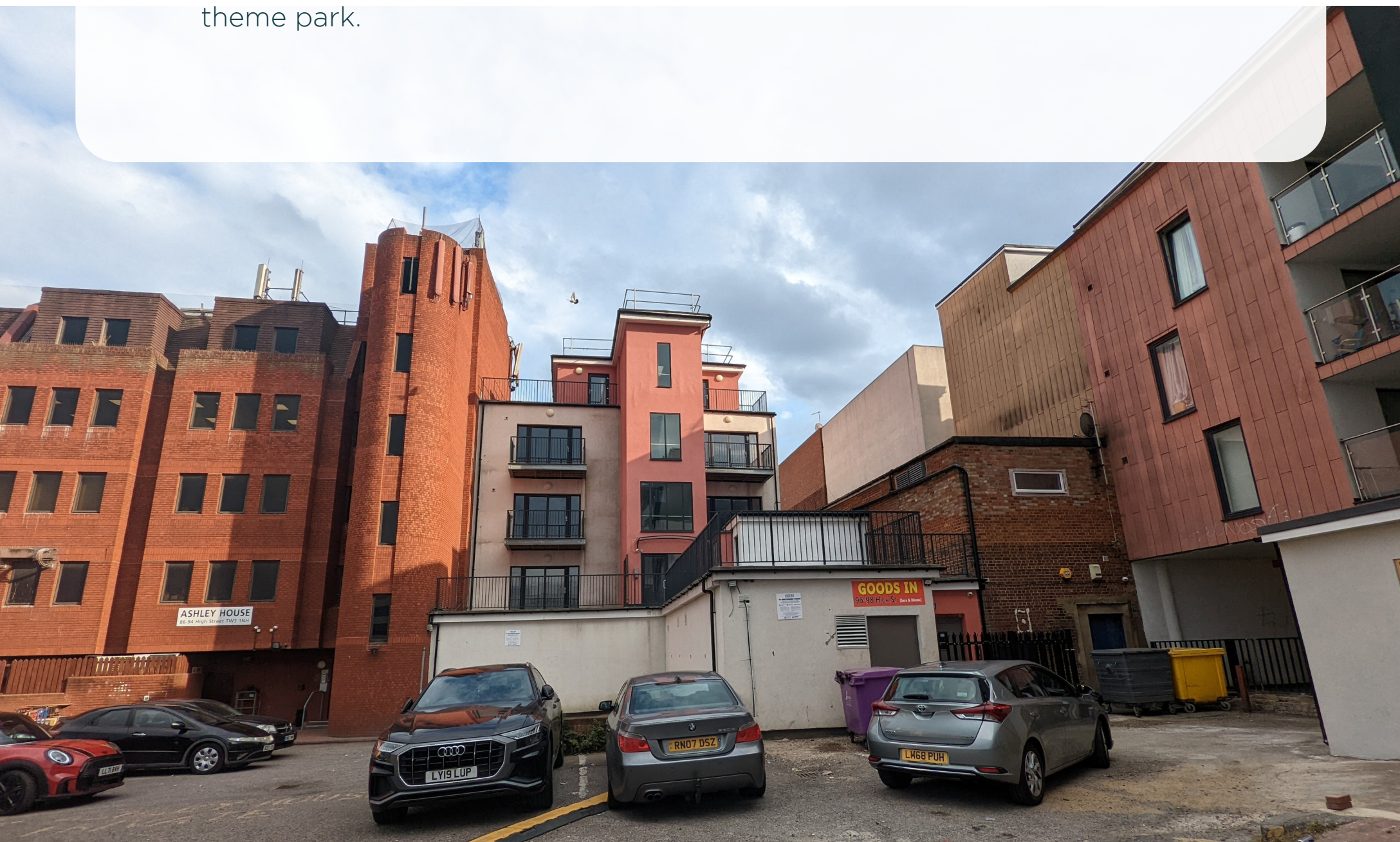


Hounslow

 98 High St, Hounslow TW3 1NH, United Kingdom

Hounslow by Charles Hope is located on the High Street with great local access and within easy driving distance of a lot of popular destinations. Heathrow Terminals - 1, 2 & 3, 4 and 5, and Osterley Park and Kew Gardens are a 20 minute drive or less. Twickenham Stadium, known for hosting rugby and large events is near, as is Thorpe Park, renowned as a thrilling and entertaining theme park.



One bedroom Apartment

· 1 Bedroom · 1 Bathroom · 2 Guest

 98 High St, Hounslow TW3 1NH,
United Kingdom

One Bedroom Apartment - Hounslow. One bedroom with king-size bed with quality cotton linen, one bathroom with bath with shower, living area with sofa and dining furniture, fully equipped kitchen. Fast business grade Wifi included for free.



Check in and check out times

Check-in at 15:00

Check out at 11:00

Optional extras

Cot - £10 any length of stay

High chair - Free

Extra Bed - £15 per night

Two Bedroom Apartment

· 2 Bedroom · 1 Bathroom · 4 Guest

 98 High St, Hounslow TW3 1NH,
United Kingdom

Two Bedroom Apartment - Hounslow. Two bedrooms with king-size beds with quality cotton linen, one bathroom with large shower, living area with sofa and dining furniture and a fully equipped kitchen. Fast business grade Wifi included for free.



Check in and check out times

Check-in at 15:00

Check out at 11:00

Optional extras

Cot - £10 any length of stay

High chair - Free

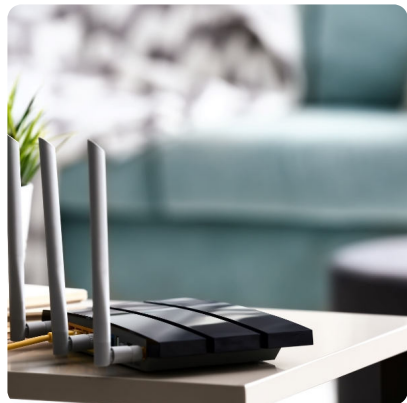
Extra Bed - £15 per night

Facilities



24hr emergency
helpline

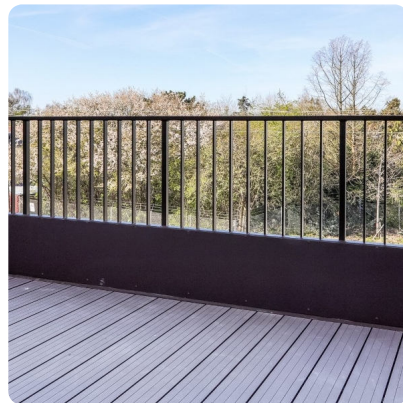
Amenities



Wifi



Fully equipped Kitchen



Balcony



Smart TV



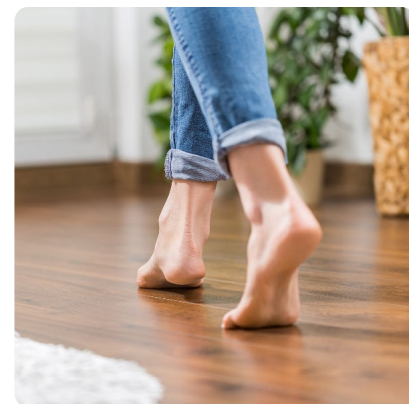
Cleaning supplies



Bathroom toiletries



Coffee machine



Hardwood floors



King size beds



Dishwasher



Iron and ironing



Hairdryer



Vacuum cleaner



highchair (Free -
Need to order)



Cot (£10 per stay)

Amenities



Kettle



Toaster



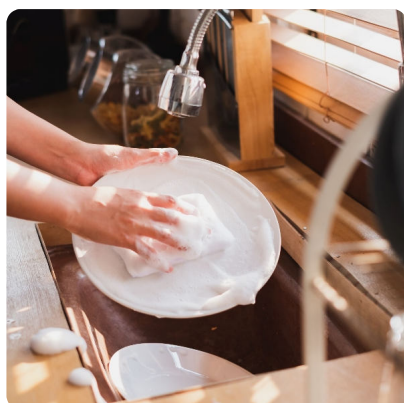
Washer/dryer



Contactless check-in



Tea and coffee essentials welcome pack



Kitchen starter pack with dishwasher liquid and tablets



Weekly housekeeping



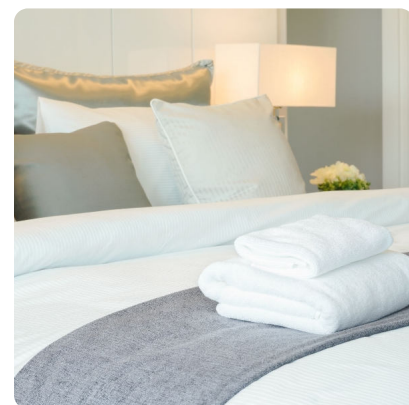
Microwave



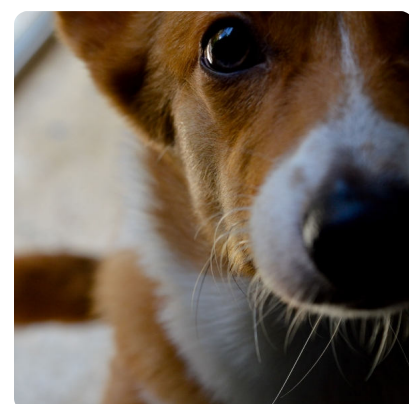
Washer/dryer



Oven and hobs



Linen and towelst



Pets allowed (extra charge per stay)

Distances

Attractions

Thorpe Park

17.9 km | 11.1 m | 40 min drive

Royal Botanic Gardens, Kew

6.6 km | 4.1 m | 19 min drive

National Trust - Osterley Park & House

3.0 km | 1.9 m | 8 min drive

Coffee Shops

Costa @ Highstreet

0.5 km | 0.3 m | 5 min walk

Starbucks @ Highstreet

0.5 km | 0.3 m | 5 min walk

Coffee and Muffins

0.5 km | 0.3 m | 6 min walk

Restaurants

Hounslow Lahori Kahari

0.2 km | 0.2 m | 5 min walk

Sahara Grill (Grill)

Less than 0.1 km |
less than 0.1 m | 1 min walk

Bombay Wok (Indo-Chinese)

0.8 km | 0.5 m | 10 min walk

The Sun (Pub and Thai restaurant)

0.5 km | 0.3 m | 7 min walk

Thakers (British-Asian-Vegan-Vegetarian)

0.3 km | 0.2 m | 4 min walk

Nando's @ Highstreet

0.3 km | 0.2 m | 4 min walk

Transport

Hounslow East Underground Station

1.7 km | 1.1 m | 24 min walk

Heathrow Airport Terminal 1

9.2 km | 5.7 m | 20 min drive

Heathrow Airport Terminal 2&3

9.2 km | 5.7 m | 20 min drive

Heathrow Airport Terminal 4

8.0 km | 5.0 m | 16 min drive

Heathrow Airport Terminal 5

13.0 km | 8.1 m | 22 min drive

Parks

Thornbury Park

1.1 km | 0.7 m | 14 min walk

Inwood Park

0.5 km | 0.3 m | 7 min walk

Events

Twickenham Stadium

3.3 km | 2.1 m | 8 min drive

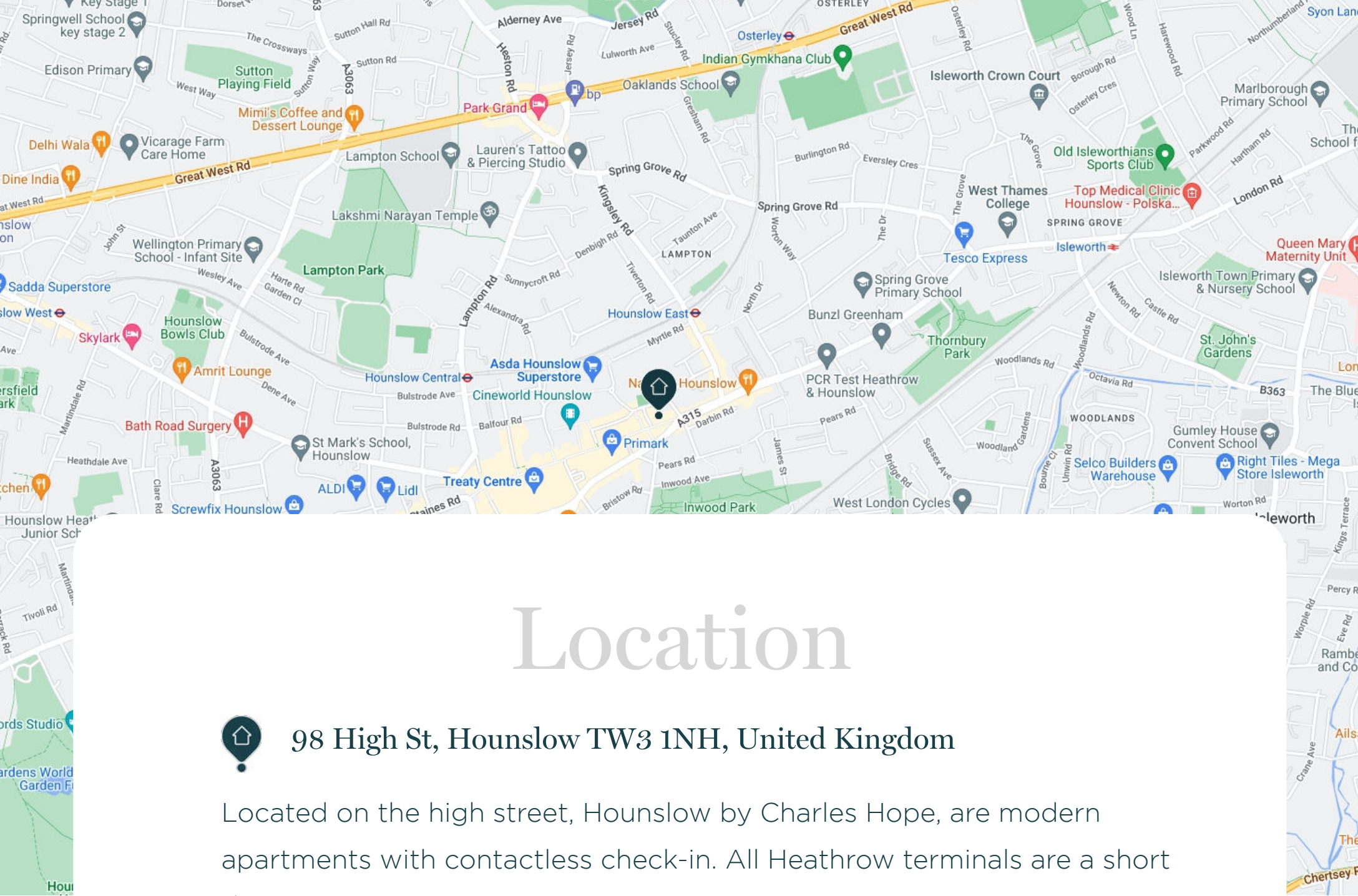
Supermarkets, stores & markets

Asda Houslow Superstore

0.3 km | 0.2 m | 4 min walk

Tesco Express @ Spring Grove Rd

0.7 km | 0.4 m | 8 min walk



Location

 98 High St, Hounslow TW3 1NH, United Kingdom

Located on the high street, Hounslow by Charles Hope, are modern apartments with contactless check-in. All Heathrow terminals are a short drive.

Call

London

0044 (0) 203 983 6300

Copenhagen

0045 (0) 787 24540

Enquire

<https://www.charleshope.co.uk/enquire/>

Short to long stays. Hounslow serviced apartments.

Get easy access without having to meet one of our team, using either a secure key locker or the app for contactless entry! The modern apartments are located on the high street, and so are ideal for picking up all you need locally, or eating out, with many cafes and restaurants to choose from. You can of course order in delivery food.

These stylish one and two bedroom apartments enjoy business grade wifi, smart TVs, balconies or terraces, king-size beds, modern bathrooms, comfy sofas and dining furniture. All apartments have a fully equipped kitchen with all you need to dine-in easily – coffee maker, washer / dryer, oven, hobs, microwave, toaster, kettle. All the crockery, glassware and cutlery.

All guests have the peace of mind from our 24 hour emergency helpline. Pets are allowed for a cost per stay by arrangement.